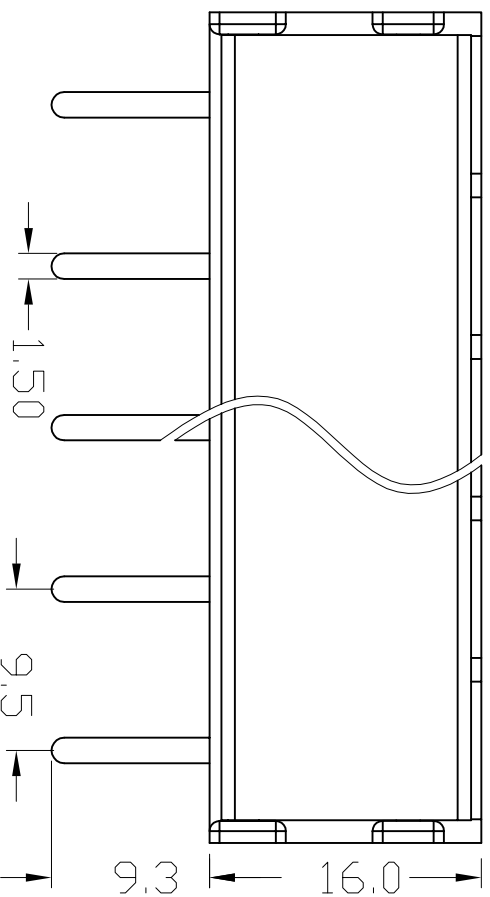
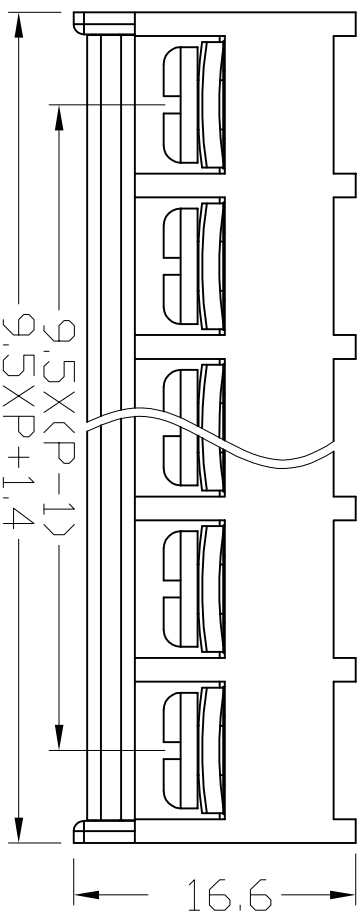
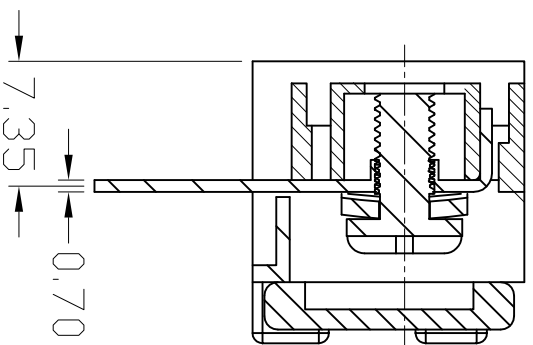


Poles: (2P-24P)
 Pitch: 9.5mm (.375")
 Voltage Rating: 300V
 Current Rating: 20A
 Wire range: 22-12AWG 4mm²
 Housing: PA66 (UL 94V-0)
 Solder Pin: Brass, Tin Plated
 Screw: Steel, M4 Nickel Plated
 Torque: 1.2N.m



设计/Designed by		绘图/Drawing by		审核/Checked by		批准/Approved by		未注公差 General Tolerance	
								X.° ±0.2°	X.° ±2°
		图名/File name		文件编号/File No.				.X ±0.1	.X° ±1°
		XY846RK		产品图				.XX ±0.05	.XX° ±0.5°
		备注/Remark		页序/Sheet				.XXX ±0.01	
								单位/Units: mm	



新莱亚电子
 XINLAIYA ELECTRONIC CO., LTD