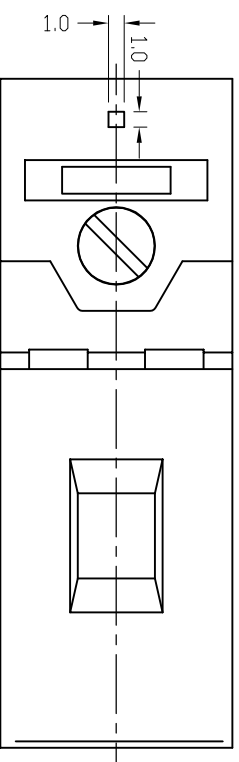


300V 20A 20-10AWG 6.0mm²
 Poles: 1P
 Pitch: 15mm (.591")

Materials

Housing: PA66 (UL 94V-0)
 Clamp: Brass, Tin Plated
 Wire Cage: Brass, Nickel Plated
 Screw: M4, Steel, Cr3+ Zinc Plated
 Torque: 1.2N. m



序号/Rev.No. 更改记录/Revision note 签名/Signature 日期/Date

设计/Drawn by	绘图/Drawn by	审核/Checked by	批准/Approved by	未注公差 General Tolerance
				±0.2 ±0.1 ±0.05 ±0.01
图名/Title		文件编号/File No.		±0.5°
XY261 产品图				±0.5°
备注/Remark		页序/Sheet		±0.01
				单位/Units: mm

新莱亚电子

XINLEIYA ELECTRONIC CO., LTD