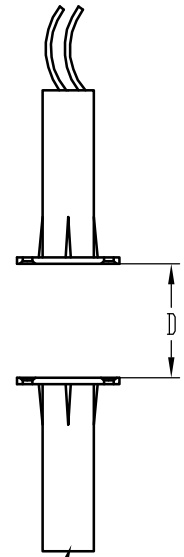
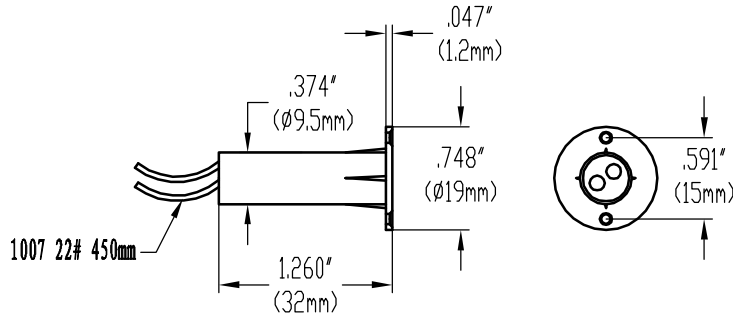


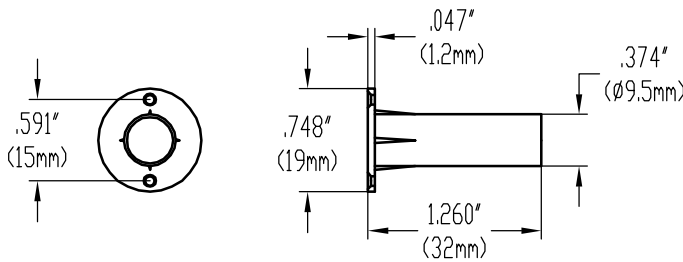
Specification

Customer		Name	Proximity switch	Type	MR-5C-41
----------	--	------	------------------	------	----------

Movement explanation



Magnet



Magnet

Movement explanation :
When D=15~25mm, the reed switches will be closed

Material Specification			Electrical Specification			Physics Specification			
Part name	Specification	Quantity	1.contact form	NC	1.min resistance to vibration value	(11-1000HZ)			
1.Magnet	—	Optional	2.contact rating	10W	2.applicable temperature	-10 ~ +85°c			
2.float body	ABS white	1PC	3.max switching current	DC100/AC100					
3.magnet shell	ABS white	1PC	4.breakdown voltage	150min					
4.o-ring	—	—	5.max switching voltage	DC0.5					
5.e-ring	—	—	6.max carry current	1.0A					
6.wire	UL 1007 22#	450mm	7.contact resistance	100max					
7.filling	Hot melt adhesive	—	8.insulation resis tance	10 ⁴ min					
8.terminal	—	—	9.get an electric shock life	10 ⁷					
9.housing	—	—	designed by:	checked by:	drawing by:	drawing date:	scale:		
10.reed switch	324	1PC							

Ningbo Holleywin Export&Import Trade Co., LTD.

filename:

drawing no.

edition:

sheet:

1